

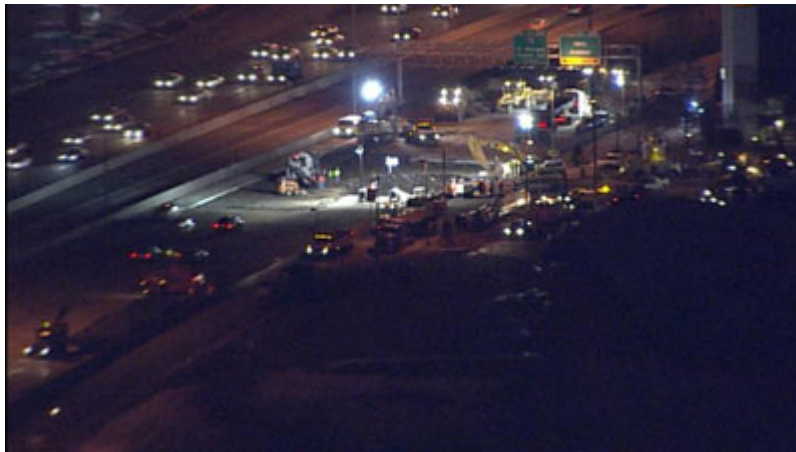
There are fewer and fewer examples of glare in my community. I did manage to find these examples.

Example 1



This is a sign next to a major highway connecting Denver and Boulder, CO. This sign advertises events at the center it is in front of. At night, I have noticed that bright light combinations are used to attract attention to this sign. In doing that, this sign can decrease your night vision on this poorly lit section of road.

Example 2



A second example is that in the Denver Metroplex, major road construction is done at night. In an effort to light the area that the road crews use, they use these flood lights connected to a portable generator. It is very blinding as you drive by. I did not get a picture of this for it is unsafe to pull off the side of the road and take a picture. I did find archive pictures though that illustrates what I drove by one night.

Example 3



A third example of glare is from oncoming headlights on US-36, a major artery connecting Boulder with Denver, Colorado. I find the unabated glare from oncoming traffic blinding at night. There is no auxiliary lighting on this highway, so it is normally dark. One particular section of this road that is most bothersome is about 3 miles ahead of this picture. It is a part of the road that makes a slight bend to the left, between the bridges of Sheridan Ave and 80th Street. The painted lines on the road are almost gone, there is no auxiliary lighting, so at night, the glare from oncoming headlights makes it difficult for me to make the corner and stay in my lane.

I have seen where the center wall is either higher, to block the headlights of oncoming traffic, or plastic fins, 6x18 inches are affixed to the top of the wall, perpendicular to the wall to block the direct glare of oncoming traffic. These fins are spaced every 6 inches or so, along the entire length of the wall. Where I have seen this in other cities, it has effectively blocked the glare and make this road safer to drive on at night.