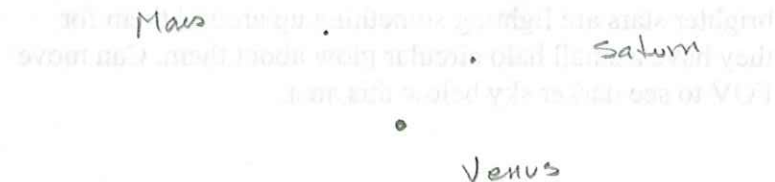


9

## Monday, August 10, 2010

Arrived at Keota, CO to clear skies. Light wind from south. Puffy clouds W->NW->N along horizon. 88 degrees.

8:43 PM. Robert (Math Grad) is here. Venus is nice  $\frac{1}{2}$  gibbous. Saturn nice. Rings opening up a bit more. See band on surface plus 2 moons. Mars is a nice, small, red disc.



NGC 5665 9:21 PM 19mm – A small, dim, round, uniformly lit glow.

Great Rift 9:29 PM NE – A nice dark swath of sky separating 2 arms of Milky Way. Goes from tip of Cygnus past Ophiuchus. Opacity 3-5.

Sky steady. Seeing OK.

NGC 5229 9:35 PM 19mm – A slender, linear sliver of light. Dim. Uniformly lit. Angle is 2 o'clock or 60 degrees from North.

A 2052 9:59 PM 19mm – In this small arc of 5 stars, the second one from bottom is this out of focus looking glow of U9799. Dim, yet easy to see it is not a star.

NGC 6052 10:09 PM 19mm – A very dim, round, small glow. With AV, see a brighter core that sometimes goes to a star like core.

M51 and M13 look incredible tonight.

U11093 10:39 PM 19mm – A slender sliver of light with hare brighter core. Angle = 85 degrees. To right and below is a small, round glow of PGC 61300 A little brighter but uniformly lit.

NGC 5907 10:44 PM 19mm – A larger,  $\frac{1}{2}$  FOV long. Brighter core that dims slowly into tapered arms. Pretty linear. No central bulge seen. Angle = 150 degrees.

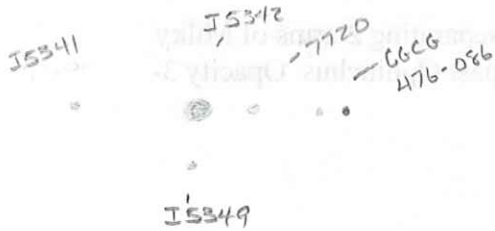
A 2249      10:53 PM      19mm – Below a brighter field star are these 4 extremely faint points of light in a bit of an arc. These 4 faint dots match a picture of 2249 I have and I believe these are 4 of the *brighter* members of this cluster. Nice.

Sky steady. Seeing Good. Light breeze from SE.

Sh 2-155      11:25 PM      32mm – A subtle lightening of the background sky and the brighter stars are lighting something up around them for they have a small halo circular glow about them. Can move FOV to see darker sky below this area.

Seeing is awesome now.

A 2666      11:55 PM      19mm – Well to the left of a bright field star are 3 glows of this cluster. One glow is faint, with 2 star like cores on glow, next to each other. Then below this is an extremely faint smudge of light. I think I see, once in a while, other faint smudges of light way to the left of these 2 and 1 more near to the right.



A 2634      12:08 AM      19mm – I see 3 members of this cluster. 7768 is easiest and largest. An oval, very dim glow with hint of a core seen on glow. Above and to left is 7766, a linear, small, almost there, uniformly lit smudge of light. Below 7768 and to right is this tiny, circular, almost not there, extremely faint smudge of light of 7765.

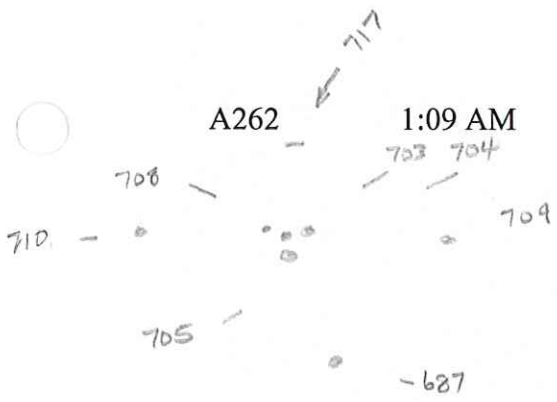


NGC 7769      12:26 AM      19mm - 7771 is a small, linear galaxy, goes from 2 – 8 o'clock with hint of a brighter core area. Very near it but not touching to upper left is a much dimmer, tiny, round glow of 7770. Then below these two is a larger, circular glow of 7769. Uniformly lit but very dim with star like core in center of glow.



A 2626      12:37 AM      19mm – An extremely faint, tiny glow is seen once in a while (pops in and out) where this cluster is to be. I am sure I am in the correct star field.

A 2572      12:45 AM      19mm – There is a noticeable glow amongst 4 very faint field stars that your eye is drawn to. The 4 faint stars match a picture I have and glow is from the members amongst these stars. Very subtle yet easy to see.



19mm – There are 8 glows seen. No details. Just glows. In center are 4 easier to see glows, all near each other. In same FOV are 4 much fainter smudges of light. A bit away from the 4 but in same FOV. One is at 5 o'clock, 2 o'clock, 11 and 9 o'clock from the 4. Very faint yet move FOV (bump scope) and can see these.

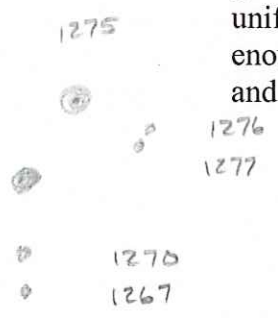
Sky is softer now. Light dew on glass of Telrad. Seeing OK though.

- A 426
- NGC 1275
- NGC 1276
- NGC 1277
- NGC 1272
- NGC 1270
- NGC 1267

1:36 PM

19mm – 1275 is largest and brightest. Has brighter core seen in center of circular, dim glow. 1272 next largest and brightest. It too has a hint of a brighter core in center of glow. Smaller circle than 1275. Rest are very faint round, uniformly lit smudges of light. Seeing OK but not good enough to see any more members. Spent some time looking and comparing with pictures if area I have.

1272



- A 194
- NGC 545
- NGC 547
- NGC 541
- NGC 535

2:01 AM

19mm – I saw 4 galaxies of this cluster. 545 and 547 are very near each other and almost touching. Both are dim, larger glows with tiny, relatively brighter cores. To left and smaller is a dimmer circular glow of 541. It too has a relatively brighter tiny core. To left of this is 535. An extremely dim, uniformly lit circular smudge of light.



Seeing and Transparency were great for most of the night. Stars are points of light, even near horizon. Jupiter showed lots of detail with 13mm eyepiece. Incredible view. Best I have seen of Jupiter in some time.