

Mike Roos and I took the motorhome to the Texas Star Party 2010. The first night we stayed at the WalMart in Calrsbad, NM and arrived about 1:30 PM on Sunday, May 9, 2010.

Sunday night was not that good of seeing so I spent the evening looking for objects on the TSP Bino from Hell list. I finished this list and poked around some more with the binocs.



## Monday May 10, 2010


The sky was good at sunset. Seeing good. Transparency good. Working on the TSP About Face and 5x5 observing lists.

NGC 3115	9:59 PM	19mm – Nice edge on with brighter core and dim halo arms that taper off core. Goes from 12:30 – 6:30 o'clock in FOV. 13mm shows it nicely. Can see more halo around core and now looks like a tilted oval.
NGC 3109	10:48 PM	19mm – Large, diffused oval, uniformly lit, dim glow.
NGC 3585	10:54 PM	19mm – Small, tilted oval with brighter core and dim halo glow around it.
NGC 2784	10:56 PM	19mm – Nice, small oval. Bright galaxy core with dim bit of halo around it.

Sky is good. Seeing good. 45 degrees.

NGC 3621	10:58 PM	19mm – Larger, dim, uniformly lit, cigar shaped glow.
NGC 3904	11:01 PM	19mm - Small, round dim glow with larger, little brighter core.
NGC 3923	11:03 PM	19mm - Oval shaped, bright, pretty uniformly lit with maybe a hint of a halo around it.
NGC 4106 NGC 4105	11:07 PM	19mm - Two small round glows, very near each other, with stellar cores and bright halo around cores. Both look the same with 4105 on right.
NGC 3242	11:12 PM	19mm – Nice round uniformly lit glow of this planetary nebula seen.

NGC 4038 NGC 4039	11:15 PM	19mm – 2 uniformly lit glows, near each other, but not touching, longer, oval shaped glows.
NGC 4361	11:17 PM	19mm – Round glow with central star seen.
NGC 3344 	11:20 PM	19mm – Larger round uniformly lit glow with 2 bright field stars at bottom of glow.
NGC 3521	11:25 PM	19mm – Nice, brighter tilted oval with small bright core and dim halo around it.
NGC 4216	11:30 PM	19mm – Nice, bright edge on with larger, bright core and dim halo arms extending each side. Goes from 3 – 9 o'clock in FOV.
NGC 4388	11:34 PM	19mm – Long, slender uniformly lit glow.
NGC 4762 NGC 4754	11:36 PM	19mm – Tiny edge on (4762) with brighter core and tiny dim arms coming off it. Then above it and to left is this small, round glow with bright core of 4754.
4754 -  - 4762		
NGC 4179	11:44 PM	19mm - Small, tilted oval with small, relatively brighter core.
NGC 4517	11:48 PM	19mm – A very long, slender oval, uniformly lit and dim. Has bright field star ½ across it and on bottom left edge. Goes from 11:30 – 5:30 o'clock in FOV and is approx 1/3 FOV long.
NGC 4527	11:50 PM	19mm – Long slender galaxy with brighter core. Is vertical in FOV. Dim overall.
NGC 4666	11:52 PM	19mm - Small, edge on with larger central bulge and relatively bright core and dim halo arms tapering off. Vertical in FOV.
NGC 5746	11:56 PM	19mm – Nice, uniformly lit edge on with nice central bulge and arms that taper off. Goes from 1 - 7 o'clock in FOV.
NGC 5061	12:00 AM	19mm – Round glow with larger bright core and bit of dim halo around it.

NGC 5078	12:02 AM	19mm – Small, dim oval glow with bit brighter core.
NGC 5101	12:02 AM	19mm – To left of 5078, a brighter oval with larger, bright core and dim halo around it. Pretty dim overall.
M83	12:05 AM	19mm – Nice. Big tilted oval with large, bright core and lots of dim halo around it.
NGC 5139	12:12 AM	19mm – Nice. Large globular with lots of stars in FOV.
NGC 5307	12:17 AM	19mm – Small out of focus star. Look at it and can see central star. Responds to O3. Very small round glow. Off white in color.
NGC 4945	12:26 AM	19mm – A dim, uniformly lit long slender glow. Seeing is pretty poor this low in south, just above mountains.
NGC 4976	12:26 AM	19mm – Above 4945 and to right is this small, fat oval, uniformly lit glow.
NGC 5206	12:31 AM	19mm – At the bottom outer edge of Omega Centauri and still in the some of its stars is this dim, oval, uniformly lit glow.
NGC 5266	12:35 AM	19mm – A small, dim oval glow with a stellar core.
NGC 4696	12:42 AM	19mm – A very dim fat oval glow with 2 field stars on left hand side of glow. Uniformly lit.
		
NGC 4373	12:46 AM	19mm – A very dim, fat oval smudge of light. W/AV, can see there is a hint of a core.
Centaurus A NGC 5128	12:51 AM	19mm – Nice. Large, round dim glow with dust lane bisecting it. Dim overall.

NGC 5253	12:53 AM	19mm – Nice long oval with larger, longer bright core that appears mottled. Dim bit of halo that on each end, goes from 11:30 – 5:30 o'clock in FOV.
NGC 5419	12:58 AM	19mm – Nice tilted oval with larger, longer bright core that is mottled. Dim bit of halo at each end of this core. Goes from 10 – 4 o'clock in FOV.
NGC 5102	1:09 AM	19mm – Long slender edge on with central bulge and brighter core there. Pretty dim overall. Goes from 11:30 – 5:30 o'clock in FOV. Small in size.
NGC 5460	1:14 AM	19mm – 17 brighter blue-white stars of this open cluster form an S shape that spans the FOV from top to bottom.
NGC 5286	1:17 AM	19mm – A small, round globular cluster with member stars seen. It's to lower left of a very bright field star.
NGC 5643	1:26 AM	19mm – Larger, <u>very</u> dim roundish glow with hint of something small at center of glow. Very dim overall otherwise.
NGC 5986	1:29 AM	19mm – A small round glow with lots of member stars seen on glow. Nice.
NGC 6124	1:33 AM	19mm – 30+ stars of approx 4 magnitudes makeup this open cluster. Fairly loose and circular in shape. Completely fills FOV.
NGC 5927	2:05 AM	19mm – Small, round glow with speckling of member stars on glow. Dim.
NGC 5946	2:07 AM	19mm – Small, very dim glow. See center is brighter than edge. Hint of speckling of stars seen on glow.

NGC 6193	2:19 AM	19mm – 12 blue-white stars of a relatively bright magnitude and approx 5 more of a dimmer magnitude makeup this open cluster. Very bright field star to left side of cluster. Very loose. Small in FOV.
NGC 6250	2:27 AM	19mm – Saw it in 8x50 Finder. About 20 stars of approx 4 magnitudes. Very loose and nicely fills center of FOV. <i>Center</i> part seems to have a glow of maybe more unseen stars.
NGC 5247	2:34 AM	19mm – Larger, roundish, <u>very</u> dim glow with bit brighter central region in center of glow.
NGC 4856	2:40 AM	19mm – Small, tilted oval with large bright core and dim bit of halo extending from ends. Bright core is most of what is seen. Goes from 1:30 – 7:30 o'clock in FOV.
M68	2:43 AM	19mm – Nice. Loose globular with lots of member stars seen. Small and dim.
NGC 6167	2:48 AM	19mm – 15+ stars of a very dim magnitude makeup this open cluster. The stars form an arrow head pointing to the left. 2 very bright field stars to upper left of cluster.
NGC 6153	2:54 AM	19mm – Small, round dim planetary nebula. Central star easily seen in center of glow. Responds well to O3.
NGC 6302	2:57 AM	19mm – Nice, elongated planetary nebula with much brighter central region.
M70	2:59 AM	
M54	3:00 AM	
M8, M20	3:02 AM	Nice. Rest of TSP 5x5 list.
M16, M17	3:15 AM	
B111	3:18 AM	
M14	3:19 AM	
M107	3:21 AM	
M5	3:23 AM	



## Tuesday May 11, 2010

67 degrees at sunset. No wind. High thin clouds overhead and thicker ones in North moving NE.

9:34 PM. Evening twilight darkening. Sky clear overhead. Clouds now low along northern horizon.

NGC 3201	10:07 PM	20x80 – Nice round uniformly lit glow. 19mm – A larger, uniformly lit globular with lots of member stars seen.
NGC 3228	10:07 PM	20x80 – A tight little grouping of approx 10 bright blue-white stars. Very compact. 19mm – See these brighter stars and several dimmer ones in this tight grouping.
NGC 3132	10:15 PM	19mm – Nice. Round mottled glow with large bright central star in middle of glow. Doesn't respond well to O3. 13mm – gives nice view.
NGC 2884	10:21 PM	19mm – Small fat oval. Very dim overall. Has larger, bit brighter core area. Has bright field star to right. Goes from 8:30 – 2:30 o'clock in FOV.
H40	10:28 PM	19mm – An irregular <u>extremely</u> faint glow with 2 or 3 star like cores seen on glow of parts a, c and d.
Abell 1060	10:40 PM	19mm – Nice. Can see longer, extremely dim glow with 2 maybe 3 star like cores on it. Then away and above and to right is this small, dim smudge of light of 12597.
NGC 3311		
NGC 3309		
NGC 3308		
NGC 3312		
NGC 3316		
12597		
M-4-25-43		
NGC 3314 A		
NGC 3314 B		

Just below a bright field star are these galaxies. 3311 and 3309 are together with a combined halo glow. See 2 tiny star cores on this very small glow. To left is a very dim smudge glow of 3308. To right of these two is a tiny glow smudge of 3312. To right of these 4 is a bit larger, uniformly lit glow of 3316. On opposite side of bright field star and a bit away (approx 1 ½ FOVs) is a large oval, uniformly lit glow of 12597. Then to left of this is a tiny smudge of light of M-4-25-43. Even though all members are very faint, easy to see all of them. By upper dim star that 3311 et. al. was between are the

two tiny, extremely faint smudges of light from 3314 A and B.

H48	11:08 PM	19mm – A dim, uniformly lit oval glow.
H42 NGC 3091	11:24 PM	19mm – A dim oval glow with hint of halo around a larger core.
NGC 3511	11:30 PM	19mm – A long slender dim uniformly lit glow.
NGC 3513	11:30 PM	19mm – In same FOV as 3511 and to right is this larger, circular uniformly lit glow.
NGC 3717	11:36 PM	19mm – A long slender dim glow. Almost vertical in FOV. Can see tiny, relatively brighter core in center and on lower left part of halo glow is a relatively bright field star.
Sky is OK. Seeing is OK.		
NGC 3936	11:49 PM	19mm – A very dim, long slender sliver of uniformly lit light.
NGC 3962	11:53 PM	19mm – A round glow with a star like core in center and core dims slowly into dimmer halo glow.
NGC 4027	11:57 PM	19mm – A roundish, uniformly lit, easy to see glow. Maybe a hint of a tiny star like core in center of glow that is seen once in a while with AV.
NGC 4038 NGC 4039	11:57 PM	19mm – Nice. Two uniformly lit glows together just above 4027. Left glow (4039) brighter than right.
NGC 3936	12:06 AM	19mm – A very dim, slender uniformly lit glow. Goes from 11:30 – 5:30 o'clock in FOV. This maybe be core of a larger oval with extremely dim halo glow.
M104	12:10 AM	Nice.
NGC 5153	12:16 AM	19mm – 5153 and 5150 are together but





separated, vertical and look the same. Small circular halo glows with brighter cores seen in center of glows. Then to left and a bit below two is a much smaller and dimmer circular glow of 5152. This one has a star like, bit brighter core.

H63 12:21 AM 19mm – A very dim, oval to round glow. Pretty uniformly lit with maybe a hint of a core at center of glow.

Omega Centauri Fine.

Abell 3574 12:48 AM 19mm – Nice. About 10 smudges of light, largest I is I 4329. A roundish uniformly lit very dim glow. To right is a very small round smudge of light of I4329A. The above it in a triangle with some space between them and extremely dim smudges of light of 5298, 5302 and E 445-35. Off to right and by itself is 5304. A bit larger and brighter smudge of light than triangle 3. Roundish in shape.

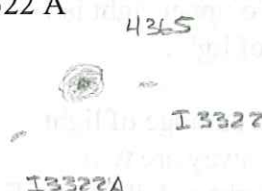
Abell 3565 1:03 AM 19mm – I 4296 is a larger, dim, yet easy to see, round, uniformly lit glow. To upper right is I 1299, a small, dim smudge of light.

Abell 3537 1:10 AM 19mm – E 443-41 is a round smudge of light. Above it and almost 1 FOV away are two extremely dim smudges of light of I 3986 and E 443-21. Both near each other and look the same.

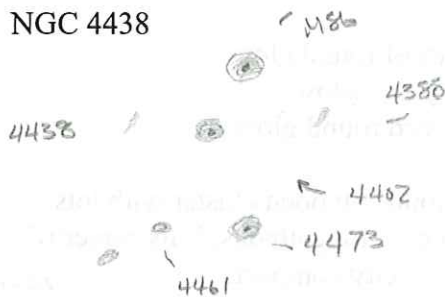
NGC 5129 1:19 AM 20x80 – Nice, large round glow.  
 NGC 5139 1:19 AM 20x80 – Nice large round glow.  
 NGC 5286 1:19 AM 20x80 – Small round glow.  
 NGC 5460 1:19 AM 20x80 – Glow where open cluster is.

NGC 4699 1:39 AM 19mm – A bright oval glow with larger core that dims slowly to edge.

NGC 4536 1:46 AM 19mm – A tilted oval. Bright. Core area much brighter. Small in size.

NGC 4527	1:46 AM	19mm – To left of 4536 and beyond a field star is this circular glow. Dimmer than 4536 yet large core area dims slowly from center to halo glow.
NGC 4845	1:52 AM	19mm – A long, slender edge on, uniformly lit glow.
NGC 4698	1:54 AM	19mm – A nice fat oval, small. Most of what is seen is core in between 2 field stars.
NGC 4570	1:56 AM	19mm – A nice, long edge on. Central bulge has real bright core and bit dimmer core around that. Arms of dim halo extend quite a way from core. Goes 9:30 – 3:30 o'clock in FOV.
NGC 4535	2:00 AM	19mm – A larger round glow. Tiny dim core seen w/AV otherwise pretty uniformly lit. Field star on lower left of halo glow. Eye wants to see spiral arms going CCW every once in a while. Not sure though.
NGC 4365 I 3322 I 3322 A	2:03 AM	19mm – A round brighter glow. Hint of dim halo around this bright central area which is uniformly lit. To right and near (I 3322) and to lower left and approx 2 times as far away (I 3322A) are these linear smudges of light.
		
NGC 4178	2:14 AM	19mm – A long slender cigar shaped, dim uniformly lit glow.
NGC 4429	2:22 AM	19mm – Nice, small tilted oval with small, central core of one brightness and dim halo easily seen around core. Goes from 11 – 5 o'clock in FOV.
NGC 4371	2:22 AM	19mm – A brighter round glow. Pretty much uniformly lit.

NGC 4388	2:25 AM	19mm – 4388 is a long slender uniformly lit edge on. Goes from 11:30 – 5:30 o'clock in FOV. To left is a round shape with larger bright core of 4402.
NGC 4402		
NGC 4473		
NGC 4461		
NGC 4438		



NGC 4419	2:32 AM	19mm – A very dim, small edge on with hare brighter central core.
NGC 4450	2:35 AM	19mm – A dim, small tilted oval with brighter central core.
NGC 4293	2:30 AM	19mm – A long, larger slender cigar shaped uniformly lit glow.
NGC 6124	2:41 AM	20x80 – A nice large knot of stars with member stars easily seen.
NGC 6231	2:41 AM	20x80 – A small knot of stars with member stars easily seen.
NGC 4866	2:47 AM	19mm – A long slender edge on. Dim. Tiny central core in center of bulge and a field star in upper halo extended arms. Goes 11:30 – 5:30 o'clock in FOV.
NGC 4710	2:52 AM	19mm – A dim, uniformly lit, larger edge on with central bulge, which is mostly above the center line of edge on.

NGC 4689 2:52 AM 19mm – A larger, round, dim uniformly lit glow.

38 degrees. Sky OK. Transparency OK.

NGC 4064	2:59 AM	19mm – A dim, small tilted oval with relatively brighter central core.
----------	---------	--

NGC 4559	3:07 AM	19mm – A long, slender, uniformly lit cigar shaped galaxy. Goes 10 – 4 o'clock in FOV with 3 field stars forming a triangle around end of halo glow.
NGC 6134	3:14 AM	20x80 – Larger, almost round glow.
NGC 6167	3:14 AM	20x80 – Small, very dim glow.
NGC 6152	3:14 AM	20x80 – Medium sized round glow.
NGC 6259	3:40 AM	19mm – A larger, roundish open cluster with lots of dim stars of approx 3 magnitudes. Fills center of 19mm FOV nicely. Pretty compact.
NGC 6250	3:43 AM	19mm – A small boxy open cluster with 2 stars really blue-white bright and 5 stars of a dimmer magnitude and 15+ stars of a faint magnitude. Very loose.
NGC 6352	3:48 AM	20x80 – Ghostly very faint circular glow. 19mm – Very dim, small, circular glow with mottling of member stars seen on glow.
I 4651	3:55 AM	20x80 – Looks like a small circular ghost patch of light. 19mm – A compact open cluster. Fills center of FOV nicely. Roughly round with 50+ stars of approx 3 magnitudes.
Harvard 13	3:55 AM	19mm – Extremely faint glow in area open cluster should be.
NGC 6541	3:55 AM	20x80 – Looks like a globular. Round with center brighter than edges. 19mm – Nice. Small. Bright. Tucked behind 2-3 brighter field stars. Bright core that dims quickly into halo. Lots of member stars seen.
NGC 6388	4:08 AM	19mm – Small, dimmer, round. Has nice bright core which is small. Dims quickly into halo which is most of what is seen. No member stars seen, just combined glow of them.
NGC 6281	4:13 AM	19mm – Boxy. Small. 20 blue-white stars form lines in this open cluster. All approx same magnitude. Then there are 10 more of a lesser magnitude mixed in. The lines of stars are cool.

NGC 6231	4:16 AM	19mm – Small and compact. 8 bright blue-white stars, then 20 dimmer and about 10 more of a much dimmer magnitude all mixed up in this cluster. More rectangular than round in shape.
NGC 6729	4:19 AM	19mm – Sky bad low in south. See glow of nebula in a fan shape.
B85	4:22 AM	20x80 – A small area of a star rich Milky Way void of stars.

Saw Jupiter rising in the east. Morning twilight was starting when I packed it in.

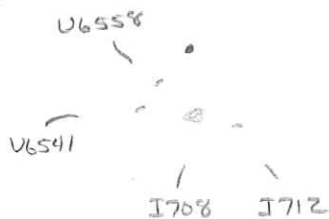
## Wednesday May 12, 2010

Third night in a row we will get to observe. Icing on the cake for me. It is 8:38 PM, 70 degrees and a light wind from the west. Its CLEAR!!!

NGC 3631	10:10 PM	19mm – A larger circular dim halo glow. Core small in center of dim halo glow and seems to have 3 separate parts. It looked the same in Mike Roos's scope.
NGC 3953	10:20 PM	19mm – Nice larger tilted oval. Larger brighter core and dim halo extending out a ways on a line from 8 – 2 o'clock.
NGC 4026	10:28 PM	19mm – An almost edge on with nice brighter core and dim halo arms that taper off each side quite a ways from 8 – 2 o'clock.
NGC 4088	10:30 PM	19mm – A long slender uniformly lit sliver of light. Almost vertical in FOV. Dim overall.
NGC 3877	10:35 PM	19mm – A small round galaxy with center the brightest and dims evenly to edge.
NGC 3726	10:41 PM	19mm – A larger longer oval. Pretty uniformly lit. Maybe a <u>hint</u> of something brighter at core. Goes from 1 – 7 o'clock in FOV. Brighter field star at upper right edge of halo glow.
NGC 3675	10:45 PM	19mm – A larger tilted oval. Easy to see. Has small bright core in center of dim halo glow. Almost vertical in FOV. 12:30 – 6:30 o'clock. Field star at lower end of galaxy.

61 degrees. Light wind from west. Seeing good. Transparency good.

Abell 1314	10:55 PM	19mm – Beneath a brighter field star I see 4 extremely faint smudges of light. 2 are almost the same (the U galaxies) and I 708 is the largest of the 4. Closest to the field star is U6558 and then near it is U6541. Then to the right of these 2 is I 708 and to the right of I 708 is I 712, a very faint round tiny smudge of light.
U6558		
U6541		
I 708		
I 712		



H60	11:05 PM	19mm – There is a hint of the a part. As least my eye says there is something there.
Abell 1318 NGC 3733 NGC 3738 NGC 3756 NGC 3737 NGC 3759	11:25 PM	19mm – Around a bright field star I see 5 glows of light. 3733 is brightest. All real dim. Below field star is small round dim uniformly lit glow of 3738. Equidistant below 3738 is an identical small round dim uniformly lit glow of 3756. Above field star and near it is an oval glow of 3733. Has hare brighter cor. Then to left if a faint smudge of light of 3737, which is the smallest and below and to left is a faint smudge of light of 3759.
Abell 1377 NGC 3898 NGC 3888	11:32 PM	19mm – 3898 is a small oval glow with large bright core and bit of halo around it. To right and in same FOV but at edge is 3888, an oval small uniformly lit glow. maybe a hint of a little brighter core.
NGC 3280A, B, C	11:41 PM	19mm – An <u>extremely</u> faint glow. Barely there. Move FOV and my eye sees the combined glow.
11:58 PM. 52 degrees. See and sky now OK. Stars Steady. Omega Centauri and Centaurus A are fine tonight.		
Abell 1228 U 6394	12:04 AM	19mm – U6394 is an <u>extremely</u> faint round smudge of light.
Abell 1185 NGC 3350	12:18 AM	19mm – 3350 is an <u>extremely</u> faint oval smudge of light.
NGC 3995 NGC 3994 NGC 3991	12:31 AM	19mm – 3 very small faint galaxies forming a triangle. Bottom left (3995) is largest, oval, dim with something little brighter at core. Bottom right (3994) is more linear and is pretty uniformly lit. Tiny also. Then above these two and a little bit farther away than distance between first 2 is (3991) this tiny, round uniformly lit glow. A bright field star just below bottom two.
NGC 3941	12:48 AM	19mm – A small oval with larger, very bright core and lots of dimmer halo around core.
H58 NGC 3882	12:55 AM	19mm – A tiny, round very dim glow with a tiny star like core of 3882. Then above it and near is a

NGC 3825 bit dimmer round smudge of light of 3825.  
Extremely faint yet easy to see.

48 degrees. Seeing Fair. No wind.

Abell 1631 1:11 AM 19mm – 4756 is a very dim oval glow with hint of  
NGC 4756 have brighter core. Then above it is a tiny curves  
M-2-33-37 glow with 2 star like cores on glow on right hand  
M-2-33-36 side of 3 galaxies. Right is M-2-33-37. Then middle  
is I 829 and left one with no core is M-2-33-36.

NGC 5079 1:11 AM 19mm - 5076 is to the left and is an elongated  
NGC 5076 tiny oval with star like core. To right and near it  
is 5079, a very faint round uniformly lit smudge of  
light.

H67 1:32 AM 19mm – 5306 is a fat oval shape, extremely dim  
NGC 5306 and small. On glow in a line are 2 star like  
M-1-35-15 extremely faint cores seen w/AV. This could be  
M-1-35-15.

H62 1:40 AM 19mm – 4778 is a very dim round glow. Then  
NGC 4778 below it and near is 4776, a very similar looking,  
NGC 4776 very dim round glow. Then to right of these two  
NGC 4761 is an extremely dim round smudge of light,  
maybe 4761.

NGC 4716 1:45 AM 19mm – 4716 is to the left and is a very faint  
NGC 4717 small round glow. 4717 is next to it and to the  
right and is smaller than 4716 but just as dim.  
Looks like an 8 on its side when you make the top  
part smaller than the than the bottom part of the 8.

NGC 5171 1:58 AM 19mm – This is an extremely faint, oval, smudge  
of light. May be more linear than fat oval. Seems to  
be longer the more I look at it.

Abell 1656 2:15 AM 19mm – 4 faint glows seen in FOV. Below a  
NGC 4874 bright field star is a faint, round, uniformly lit  
NGC 4889 glow of 4874. Below it and to left is a bit larger  
NGC 4921 faint round glow of 4889. Way to the left of these  
NGC 4911 2 but in same FOV is largest round glow with  
hint of brighter core of 4921. Then below and to  
right is a tiny, round, smudge of light of 4911.

4921

4889

4911



I spent another hour and a half looking for galaxies and not finding one. The sky seemed OK, but the seeing and transparency were gone.

## Thursday May 13, 2010

High based cumulus clouds along eastern sky about 20 degrees up and moving to the north. Wind from east.

67 degrees at 10:03 PM. Sky is good and Transparency OK. Light wind from NE.

Wilds Triplet MGC-01-30-32 MGC -01030-32 MGC-01-30-34	10:11 PM	19mm – A very small, extremely faint round glow. A bright field star is to the left and very near it. These are galaxies MGC-01-30-32, MGC-01-30-33 and MGC-01-30-34.
NGC 4933	10:19 PM	19mm – A longer, small, cigar shaped uniformly lit dim glow. Just below and to right of a bright field star. Has a hare brighter core and maybe a dim field star on upper halo glow. Goes from 11 – 5 o'clock in FOV.

Sky is now very poor. All of a sudden. Only see 3<sup>rd</sup> magnitude stars now. 66 degrees. Western sky all clouded out.



Saturday night was cloudy and we left Sunday morning for home. We pulled the motor home up to where the scopes were in south field and had it all loaded by 8:15 AM. I was going to take the motor home back to where we parked it to load the Focus when Mike said the side door was open. I remembered I had poured myself a drink that was sitting on the counter. I left the driver's seat with the motor home in reverse. I hit the break but the motor home had backed up quite a bit and missed hitting the Focus by 5 feet. I was pretty shaken. Need to be much more careful.

We drove home and arrived in front of my house at 11:30 PM. Slept in the motor home on the street and packed up Mike's car Monday morning and he was gone by 8 AM.

It was nice to visit the TSP again. I gave a talk on Tips and Techniques that everyone enjoyed. Met a lot of old friends from Texas, some of I worked with at Rockwell. I really enjoyed the trip, which is probably my last. Too far to drive for questionable seeing.